

CTH3 315 T4 0,25kW F400 (279310106)

GENERAL DATA



ROOF FAN, ABS COWL 400°C/2h

MANUFACTURING FEATURES

- Roof cowl made of ABS
- Structure, roof base support and bird protection guard made of galvanised steel.
- High efficiency backward impeller with self-cleaning system of steel.
- Standard asynchronous motor with IP-55 protection and Class F insulation.

Manufactured with standard voltages: 230V 50Hz in single phase motors, 230/400V 50Hz in three phase motors and 400V 50Hz in 2 speed motors.

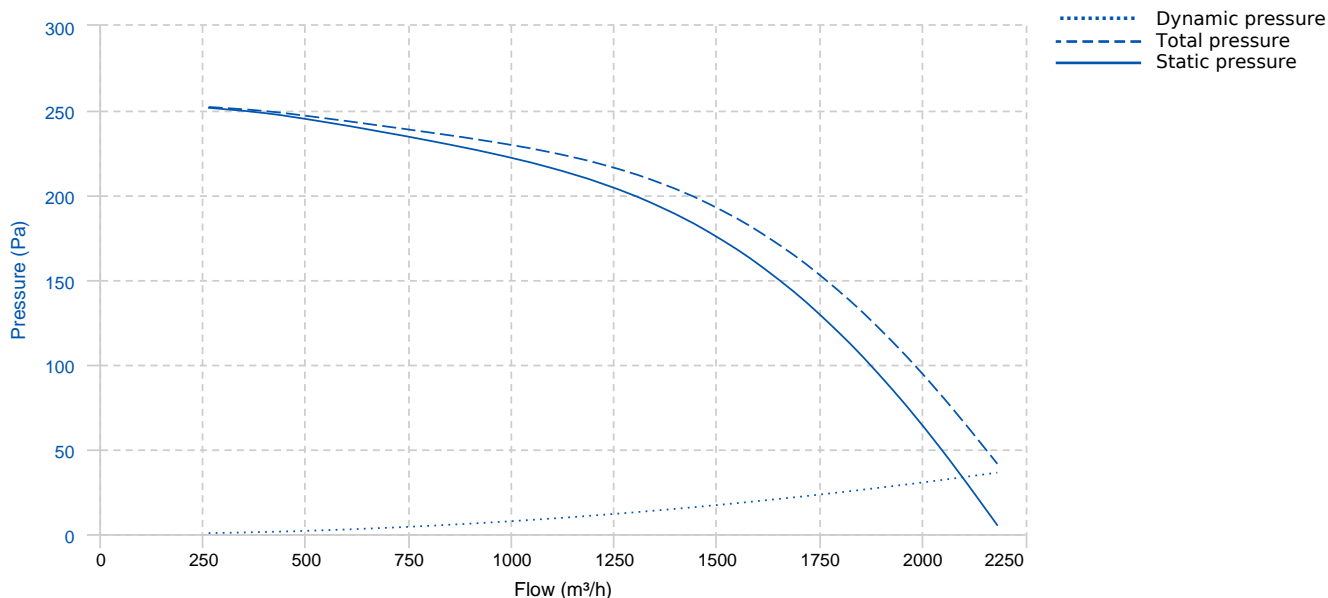
APPLICATIONS

Specially designed for roof installation, they are suitable for:

- Smoke extraction.
- Smoke emergency exhaust with motor outside the hazardous area.
- Air renewal in buildings and industries.
- Industrial and professional kitchen hoods.
- Maximum continuous working temperature: carried air 80°C, environment 60°C for three phase and 50°C for single phase motors.

Official homologation by the European laboratory APPLUS according to EN 12101-3:2015
Certification Nr: 0370-CPR-2656

PERFORMANCE CURVE



TECHNICAL DATA

Fan							
RPM	1400	Approx. weight	15 kg	Max. Flow	2190 m³/h		
Motor							
Power	0,25 kW	RPM	1400	I max. (230V)	1,38 A	I max. (400V)	0,79 A

Motor

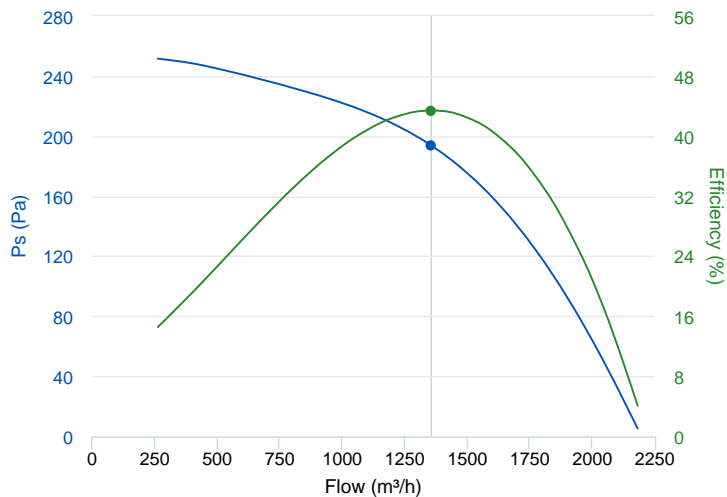
Size	71	Approx. weight	5.4 kg
------	----	----------------	--------

ERP DATA

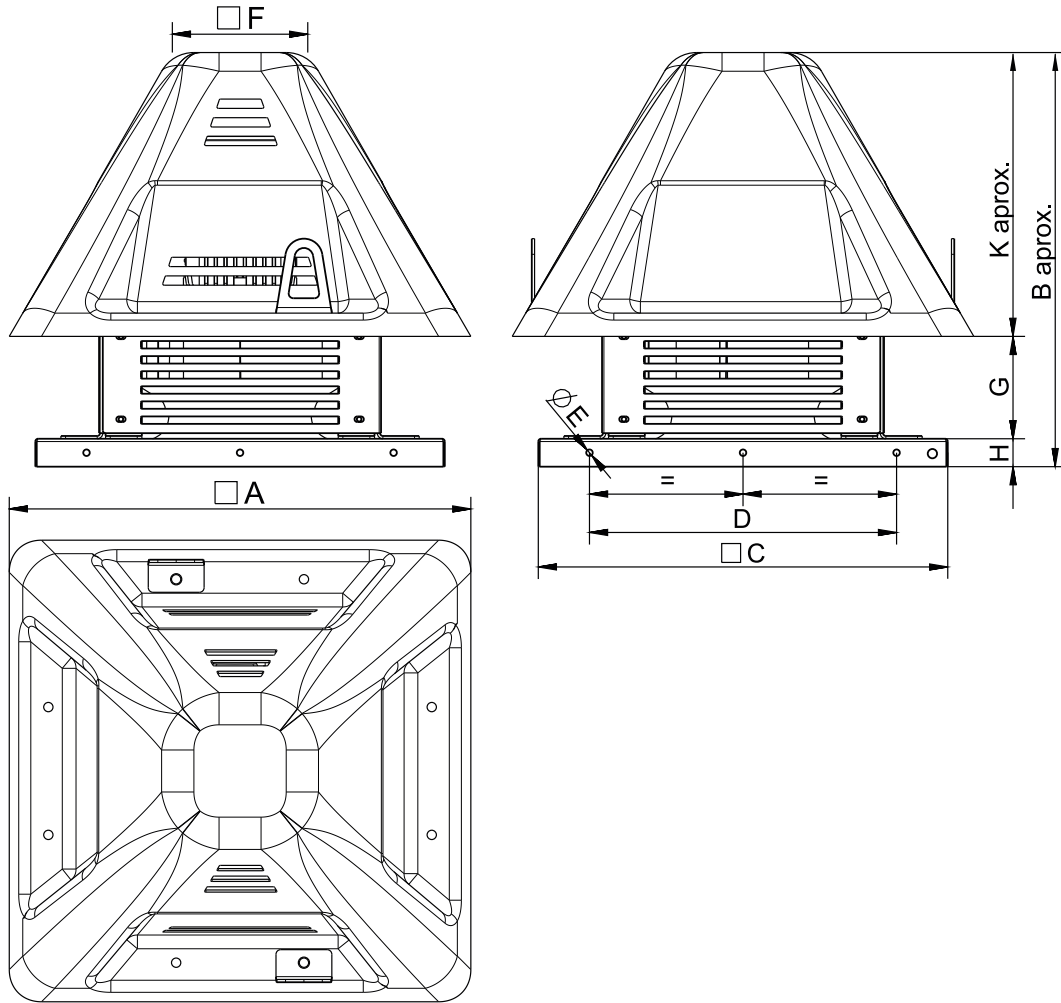
Fan data sheet

Fan type	Unit for non-residential ventilation (LOT 6)
Typology	Unidirectional
reports.other	None
Type of driver	None
Motor power (kW)	0.25

	Fan values	ERP Requirements 2018
Max. efficiency (%)	43.4	31.16
Effic. Heat recovery (%)	-	
Pabs (kW)	0.174	
Flow (m³/h)	1356.94	
Static pressure (Pa)	193.59	
Speed (m/s)	4.84	
SFP (W/m3/s)	462.06	



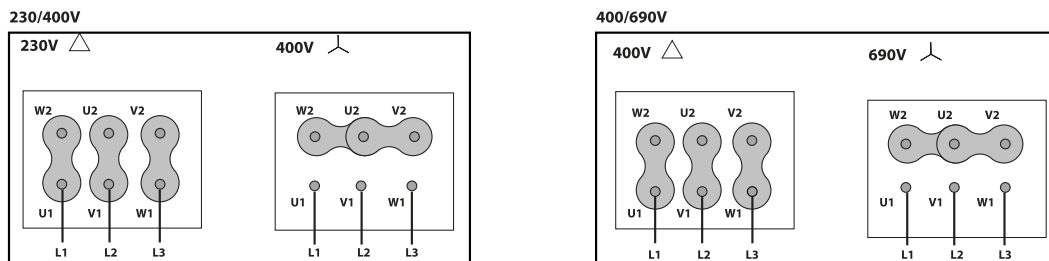
DIMENSIONS



Dimensions (mm)

A	616	B aprox.	548	C	595	D	450	E	9
F	240,2	G	183	H	40	K aprox.	325		

WIRING DIAGRAM



ACCESSORIES



SAFETY SWITCH
INT 25 3P A
REF: INT253PA



SAFETY SWITCH FOR 400°C/2h
INT 400 25A 3P
REF: 508902501



FIXING KIT FOR CTH3
KF 280-315
REF: 960004620



CTH3 TILTING KIT
KB 280-315
REF: 960004520



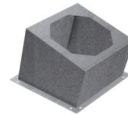
CTH3 VERTICAL DISCHARGE
KV CTH-3 280-315
REF: 960004720



FREQUENCY SPEED CONTROLLER
SFC 230 I 2,5A *
REF: SFC230I003



FREQUENCY SPEED CONTROLLER
SFC 400 III 1,2A *
REF: SFC400III1



INCLINED ROOF FAN SUPPORT
BTI 570
REF: A-50870570XX

SPARE PARTS



	Code	Model	Qty
1	R-279284479	ROOF COWL CTH3 280-315	x1
2	721001126	MOTOR 0,25kW T4 B5 230/400V	x1
3	R-279319381	IMPELLER THRE R63B1 315X90x14 RD	x1
4	R-279311772	INLET-FRAME CTH3 315	x1